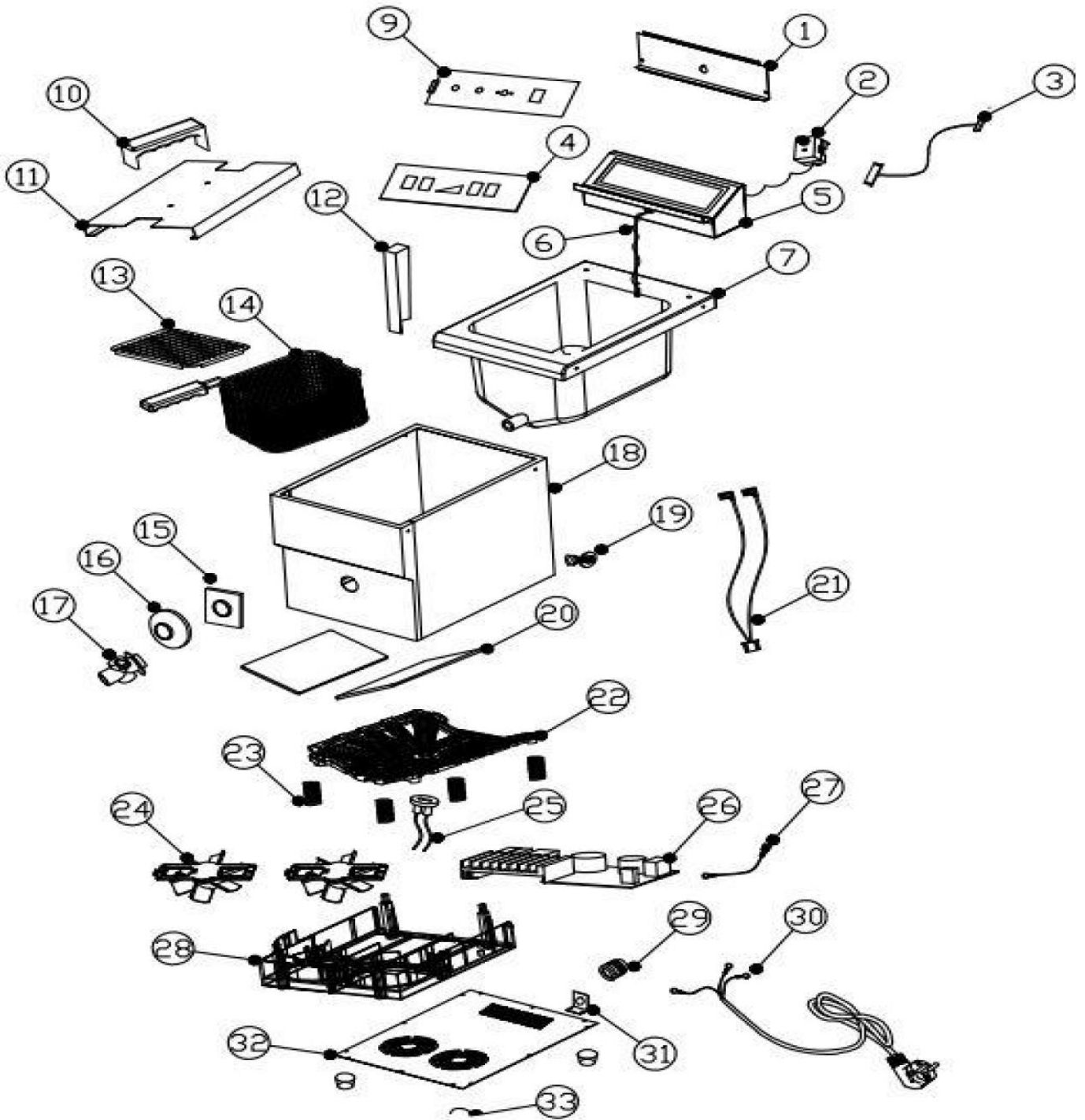


BIF

Exploded parts diagram







| Part Number | Number | Description | Qty |
|-------------|--------|-------------------------------|-----|
| *** | 1 | Control Box Rear Panel | 1 |
| B3-5001122 | 2 | Liquid Expansion Thermostat | 1 |
| *** | 3 | Control Panel Connection Wire | 1 |
| *** | 4 | Control Panel Glass | 1 |
| *** | 5 | Control Box | 1 |
| B3-5001126 | 6 | Oil Temperature Sensor | 1 |
| *** | 7 | Tank | 1 |
| B3-5001129 | 9 | Control Panel | 1 |
| B3-50011210 | 10 | Handle | 1 |
| B3-50011211 | 11 | Lid | 1 |
| *** | 12 | Sensor Support | 1 |
| B3-50011213 | 13 | Filter Screen | 1 |
| *** | 14 | Fry Basket | 1 |
| *** | 15 | Fixing Panel | 1 |
| *** | 16 | Tap Cover | 1 |
| *** | 17 | Tap | 1 |
| *** | 18 | Stainless Steel Housing | 4 |
| *** | 19 | Equal Potential Terminal | 1 |
| *** | 20 | Inside Glass Plate | 1 |
| *** | 21 | Thermostat Connection Wire | 1 |
| B3-50011222 | 22 | Heating Coil | 1 |
| *** | 23 | Spring | 1 |
| B3-50011224 | 24 | Fan | 1 |
| B3-50011225 | 25 | 11A Sensor | 1 |
| B3-50011226 | 26 | Main PCB | 1 |
| *** | 27 | Earth Wire | 1 |
| *** | 28 | Inner Plastic Housing | 1 |
| *** | 29 | Cord Clamp | 1 |
| *** | 30 | Power Cord | 1 |
| *** | 31 | Power Cord Fixing | 1 |
| *** | 32 | Bottom Panel | 1 |
| *** | 33 | Feet | 4 |

*** Please contact Spares for assistance ***