

CATER-WASH

Knee Operated Wash Basin - Assembly Instructions

Models: CK8526



Caterkwik Ltd

The Lakeland Catering Centre

Newlands

Ulverston

Cumbria

LA12 7QQ

01229 480001

info@caterkwik.co.uk





General Information

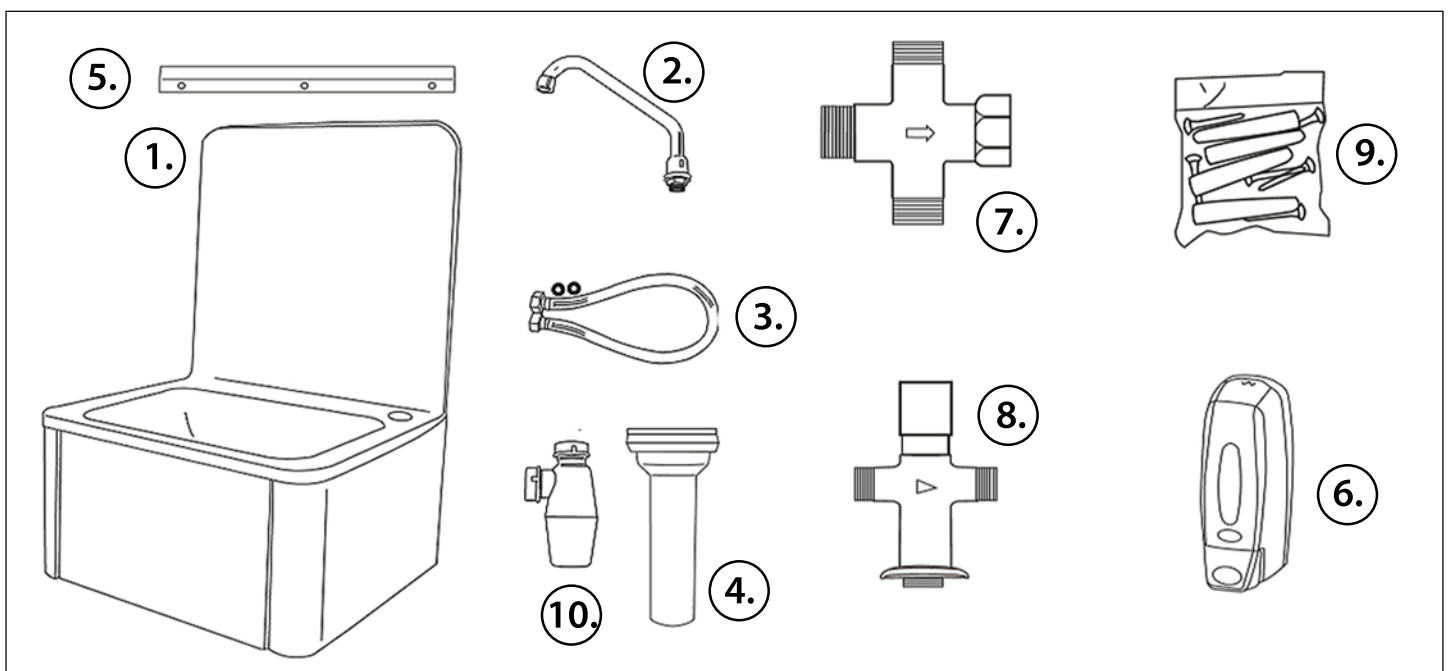
Please read these instructions carefully as they contain important information for the installation and operation of the hand wash sink.

After unpacking, please check both the condition of the sink and that all parts are included. In case of damaged parts, please contact Caterkwik.

Dispose of the packing material according to your local regulations, all the packaging materials (*plastics, cardboard, polystyrene foam*) should not be left within the reach of children, as they are a potential hazard.

Contents:

1. Sink
2. Tap
3. Flexible hoses
4. Plug assembly
5. Wall bracket
6. Soap dispenser
7. Mixing valve
8. Push button
9. Fixings bag
10. Waste trap

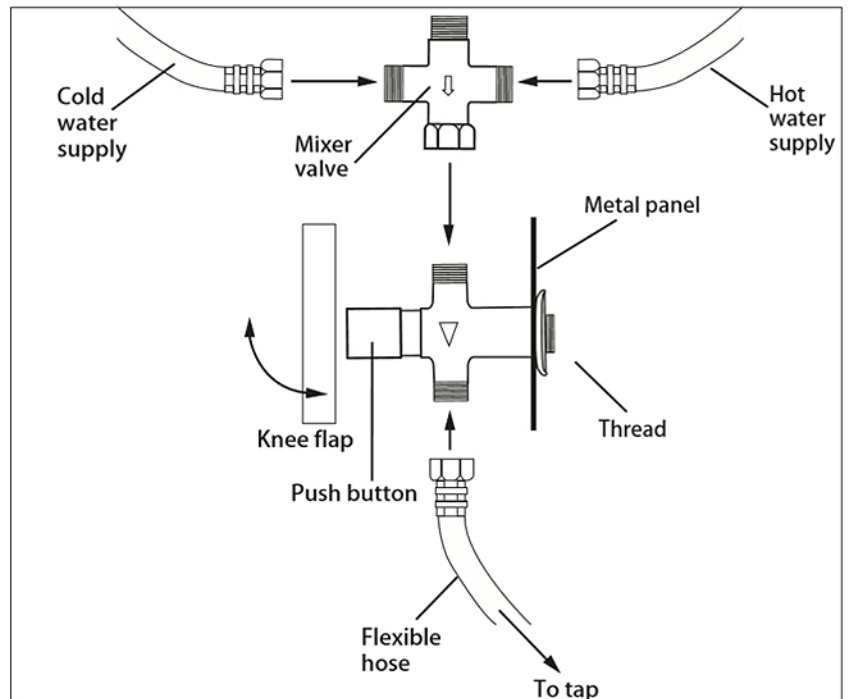
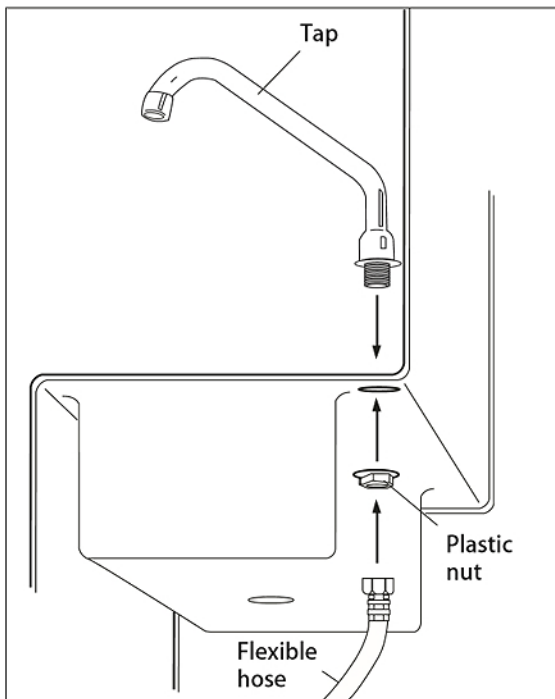




Knee Operated Wash Basin - Assembly Instructions

Assembly

1. Install the waste trap unit at the sink drain.
2. Install the tap into the hole located above the right side sink edge.
3. Install the flexible hose (under the sink edge) to the tap.
4. Fix the sink with the attached support and screws in a horizontal position on the wall.
5. Screw the valve to the tap hose taking into account the direction of water flow. (There is a flow direction arrow on the valve)
6. Install the valve into the hole on the crossbar of the sink, and lock in place with the nut.
7. If you require the mixing valve for cold / warm water, then mount this valve on the push button.
8. The soap dispenser can be fastened to the sink or nearby wall.
9. The connection to the water supply pipe and also the drain should be installed by a trained plumber. These are not included in the delivery.





Cleaning

Your Knee Operated Wash Basin should be cleaned daily, using a mix of soap and water.

1. Using a damp cloth, clean the basin using a mixture of gentle soap and water
2. Dry thoroughly using a separate dry cleaning cloth.
3. Do not use abrasive cleaners such as scouring pads or cleaning products that contain alcohol or thinners.
4. Make sure to regularly check and clean out the waste trap for effective draining of the basin.