

**CATER-WASH**

## Parts Manual—Undercounter Dishwasher CK1543

Also available without break tank CK5001 & CK5502



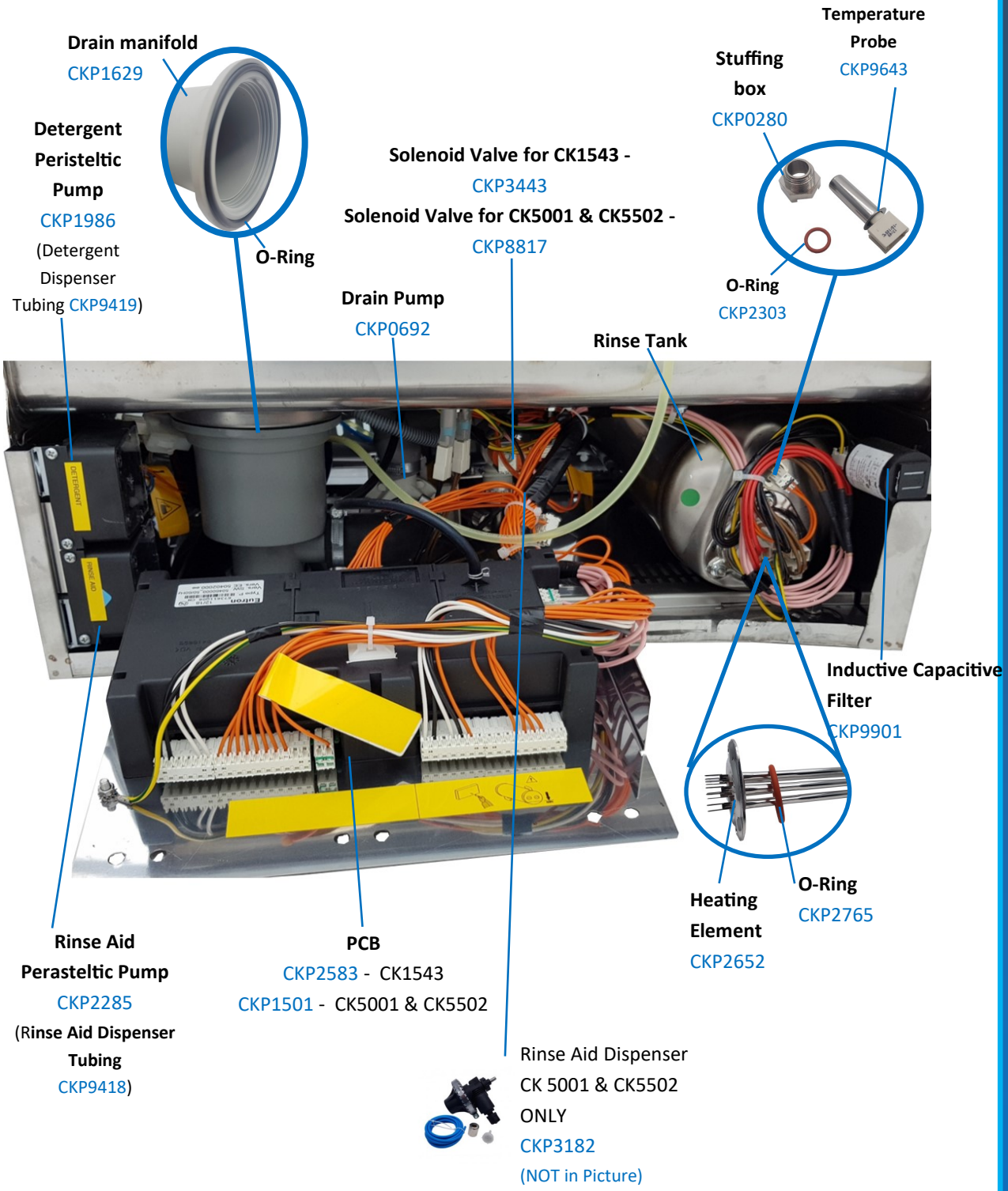
**CATER-KWIK**

The Lakeland Catering Centre  
Newland  
Ulverston  
Cumbria  
LA12 7QQ

Tel: 01229 480001

Email: [info@caterkwik.co.uk](mailto:info@caterkwik.co.uk)



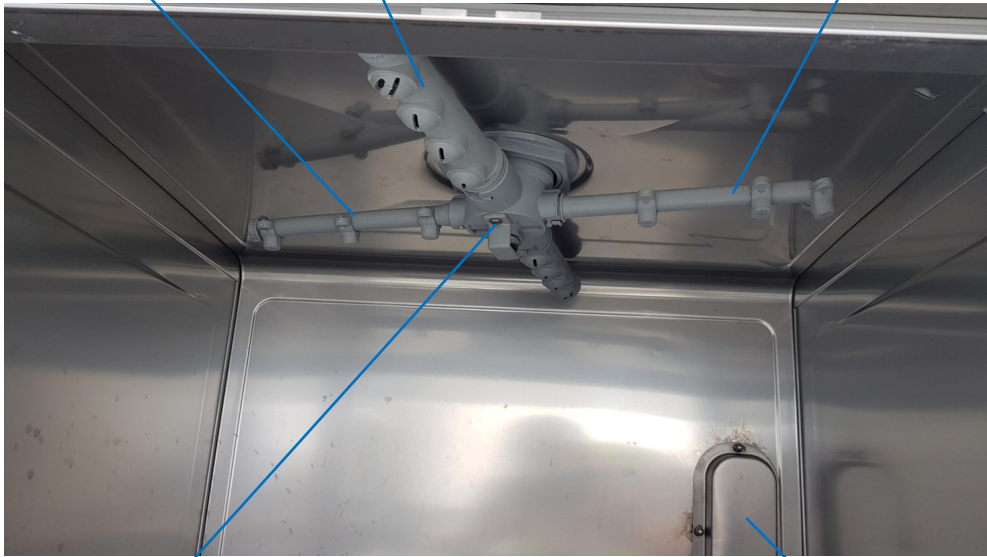


# TOP

Rinse Short Arm  
CKP9298

Wash Arm  
CKP9297

Rinse long Arm  
CKP9297



# BOTTOM

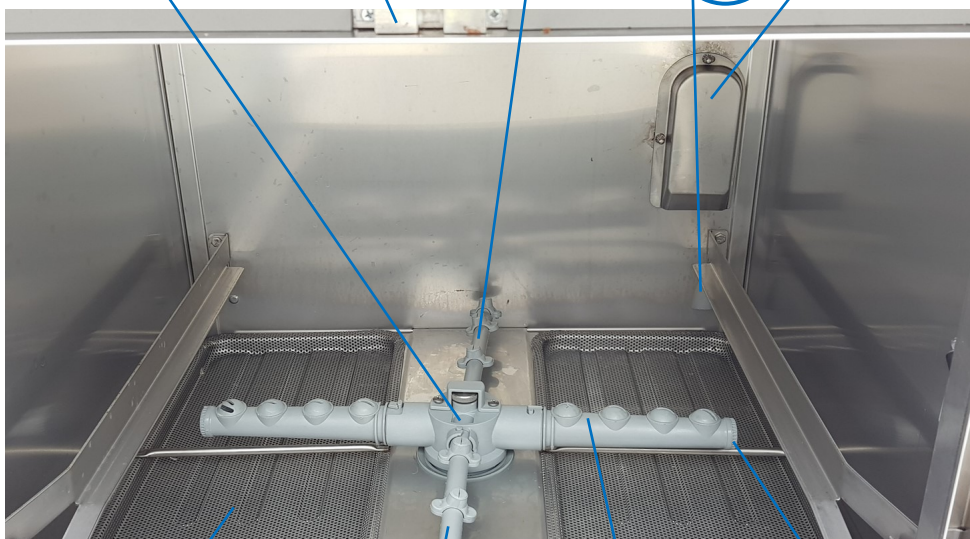
Centre Boss  
CKP9293

Door Catch  
CKP9271  
(Door stop CKP9536)

Rinse Short Arm  
CKP9298

Air Chamber  
CKP8853

Air Break cover  
(ONLY ON CK1543)



Filter Tray  
CKP4990

Rinse long Arm  
CKP9297  
(Rinse Arm Cap  
CKP9299)

Wash Arm  
CKP9297

Cap for Wash Arm  
CKP9296

# 4 Parts Locations – Door & Inside underneath Filter Tray

**Temperature Probe**  
CKP9643

**O-Ring**  
CKP2303

**Air Trap**  
CKP8308



**Plug**  
CKP0243

**O-Ring for overflow pipe**  
CKP0467

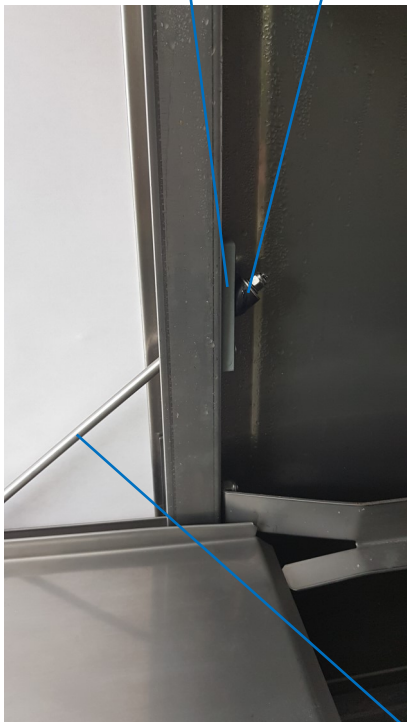
**Filter**

**Wash tank Element**  
CKP2109

**Shock Absorber**  
CKP9286

**Door plate**  
CKP9285

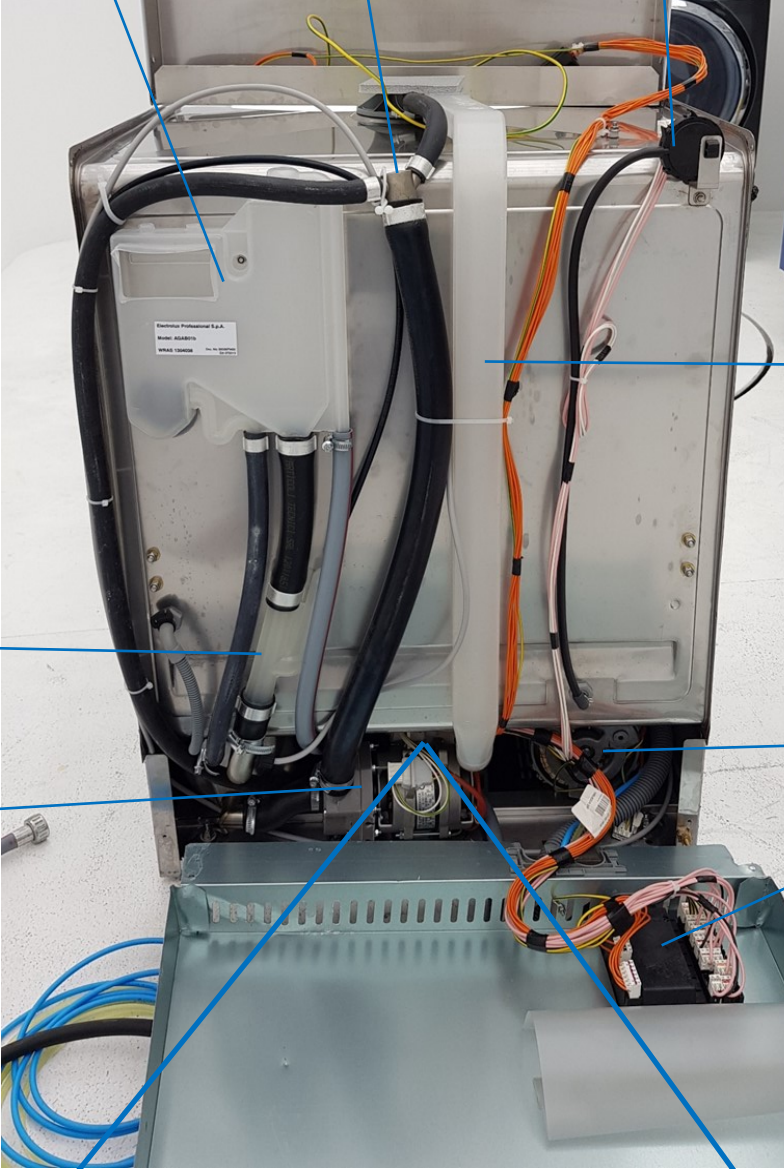
**Door seal**  
CKP6583



**Tie Rod**  
CKP9282

**Door Hinge**  
Left CKP2251  
Right CKP2253

Break Tank  
3 Way Connection  
Pressure Switch  
CKP9881



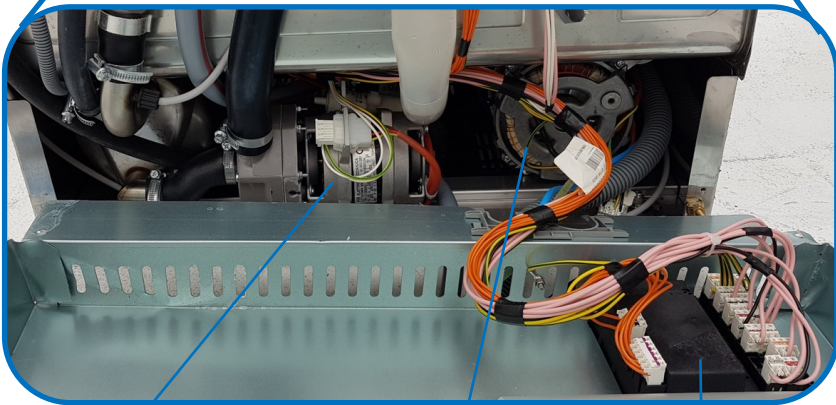
Top Wash Piping

Pressure Bell

Wash Pump  
CKP0126

Rinse pump  
CKP2597

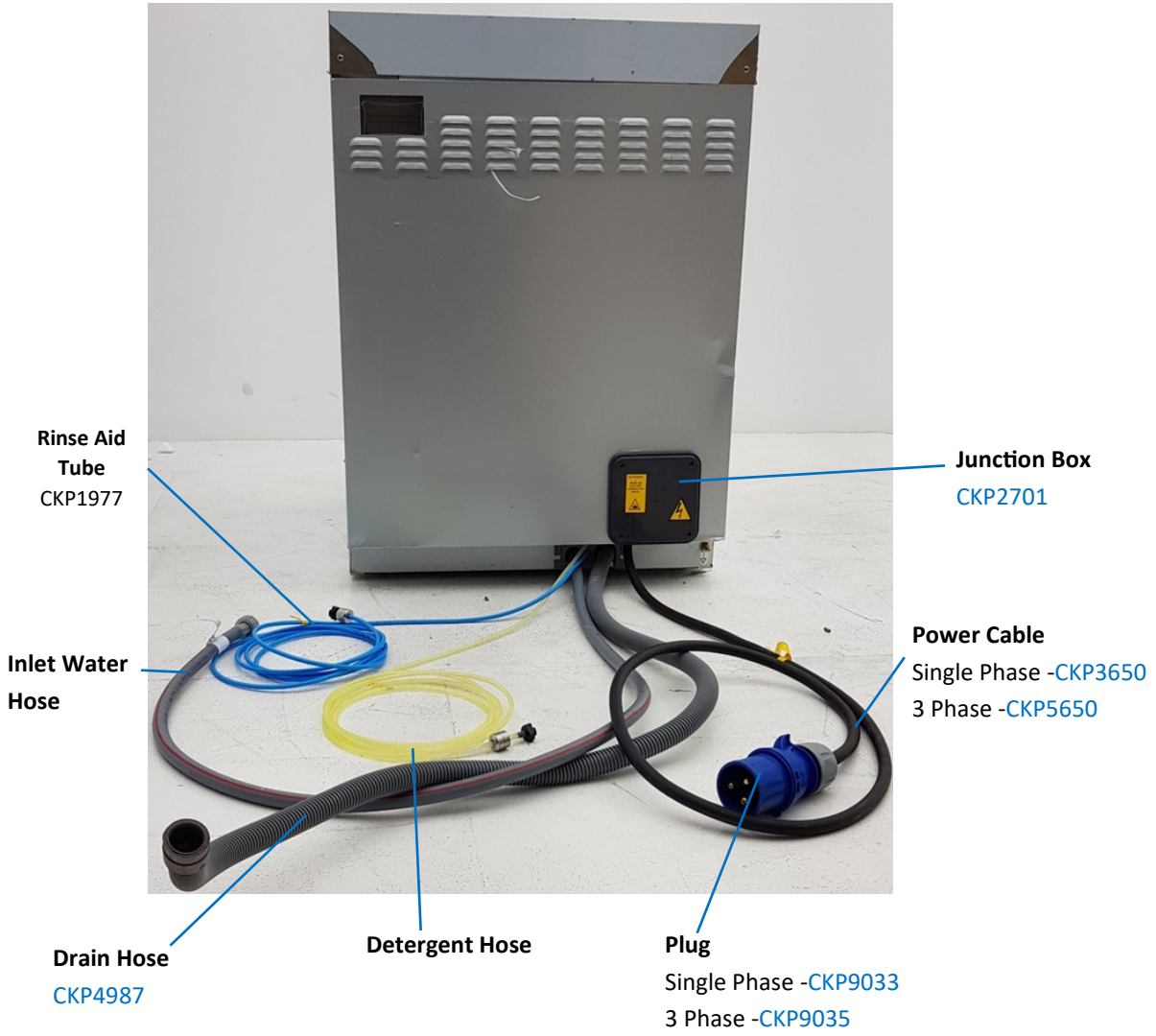
Terminal Board  
CKP1110 -CK1543  
CKP2701 -CK5502  
& CK5001



Rinse Booster Pump  
CKP2597

Wash Pump  
CKP0126

Terminal Board  
CKP1110 -CK1543  
CKP2701 -CK5502 &  
CK5001



## Set up for Single Phase



**Junction Box -**

CK1543 -CKP1110

CK5502 & CK5001 -CKP2701

**Be aware when switching to Single phase from 3 Phase you need to reduce power. This can be done by adding a hot water supply.**

**Cable Needed:**

1m of 3core 6mm  
Cable Rubber  
Flexible 32A Black  
CKP3650



**Plug Needed:** 32A  
3PIN, Commando  
Plug, BLUE  
CKP9033



**Socket needed:**  
IP44 Interlocked  
Switch Socket



## Set up for 3 Phase



**Cable Needed:**

1 Meter of 5  
Core 6mm  
Flexible Cable  
CKP5650



**Plug need-  
ed:** 32A 5 Pin  
Commando Plug  
Red IP44  
CKP9035



**Socket needed:**  
32A Three  
Phase IP44  
Gateway Socket  
CKP3254

