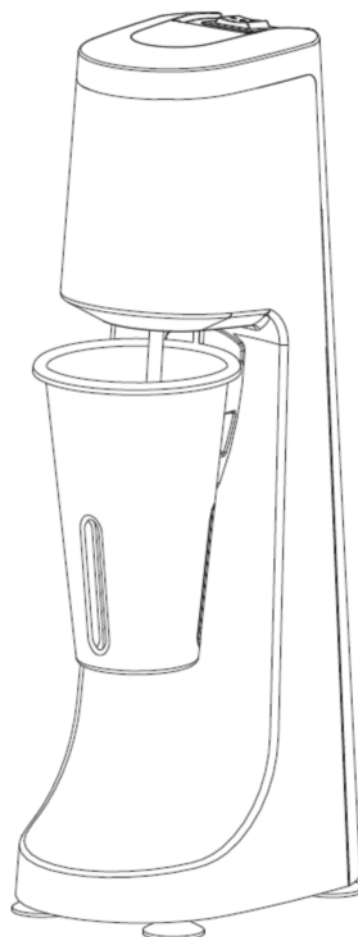


# CATER-MIX

## DRINK MIXER MODELS: CK0097

*Please read this manual carefully prior to use  
& keep it in a convenient place for future reference.*

---



CATER-KWIK

CATER KWIK, The Lakeland Catering Centre, Newland, Ulverston, Cumbria, LA12 7QQ  
Tel: 01229 480001 | E-mail: [INFO@CATERKWIK.CO.UK](mailto:INFO@CATERKWIK.CO.UK)

# CONTENTS

Thank you for purchasing the Cater-Mix CK0097 high performance commercial mixer. In order to ensure safe operation, you are advised to read to this manual carefully to fully understand the features, installation & operational details of this equipment.

## CONTENTS:

<b>IMPORTANT</b>	<b>3 - 4</b>
<b>CLEANING</b>	<b>5 - 7</b>
<b>DIRECTIONS OF USE</b>	<b>8</b>
<b>SPECIFICATION</b>	<b>9</b>
<b>NOTES</b>	<b>10</b>

# IMPORTANT



## IMPORTANT SAFETY INSTRUCTIONS

We have provided many important safety messages in this manual and on your appliance. Always read and obey all safety instructions.

**WARNING** - When using electrical appliances, basic safety precautions should be followed to reduce the risk of personal injury, including the following:

### IMPORTANT SAFETY INSTRUCTIONS


Your safety and the safety of others is very important

- Read all instructions before using mixer.
- Plug into a grounded outlet.
- Inspect mixer and agitator daily.
- Do not use an adapter.
- Replace agitators every 90 days.
- Do not use an extension cord.
- Do not operate any appliance with a damaged cord or plug, or after the appliance malfunctions or is damaged in any manner.
- Disconnect power before cleaning servicing, and before installing or removing the blade.
- Do not spray or submerge mixer in water.
- Always use metal container when mixing.
- Do not put spoons or other utensils in metal container when mixing.
- Do not allow agitator to hit container sides when mixing.

**- SAVE THESE INSTRUCTIONS -**

# IMPORTANT

 Disconnect the power before cleaning the mixer to avoid electric shock.

 Electric shock hazard:

- Plug into a grounded outlet.
- Do not remove ground.
- Do not use an adaptor.
- Do not use an extension cord.

Failure to follow these instructions can result in electric shock or fire.

 Injury Hazard

Disconnect power before installing or removing the blade.

Always use metal container when mixing.

Do not put hands, spoons, or other utensils in metal container when mixing.

Failure to follow these instructions can result in serious injuries.

# CLEANING



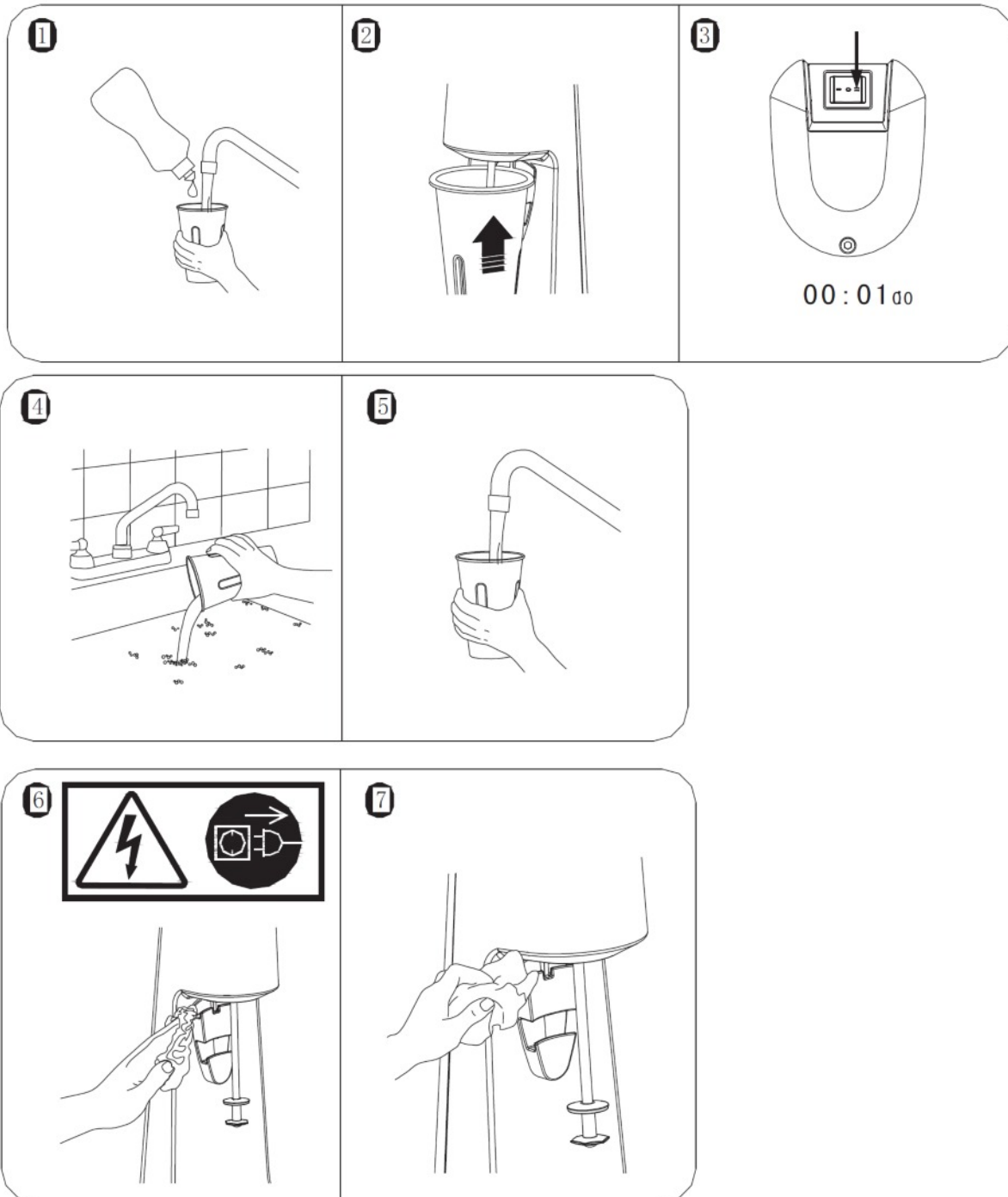
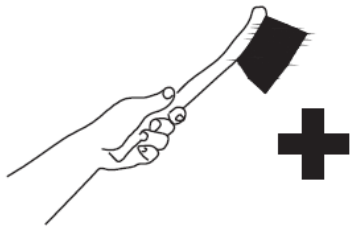
To avoid damage do not lift the mixer by the shaft.

## Cleaning

1. Fill the container with appropriate cleaning fluid. Position the container properly on the mixer and run on a low speed for 1 minute.
2. Remove the container and empty the cleaning fluid and rinse the container thoroughly.
3. To dry, run the mixer on a low speed for 30 seconds with the container in place.

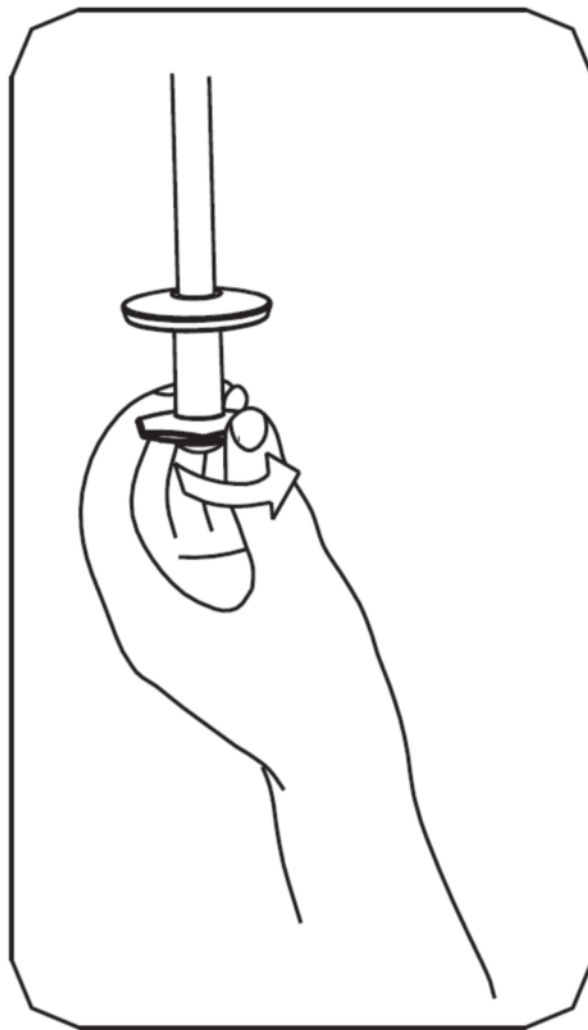
NOTE: If preferred, the container guide, container and agitator may be cleaned in a dishwasher.

# CLEANING



# CLEANING

After cleaning the agitator carefully replace. See below.



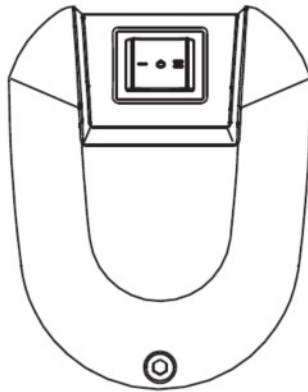
# DIRECTIONS OF USE



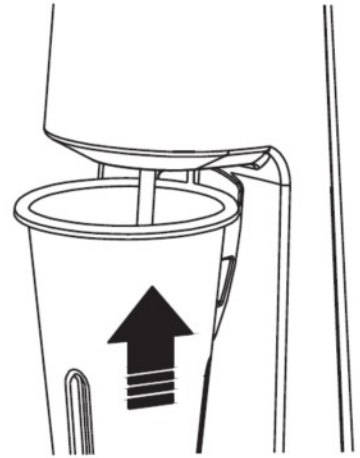
1



2



3





# SPECIFICATIONS

Motor: 400W

Power Supply: 230-240V

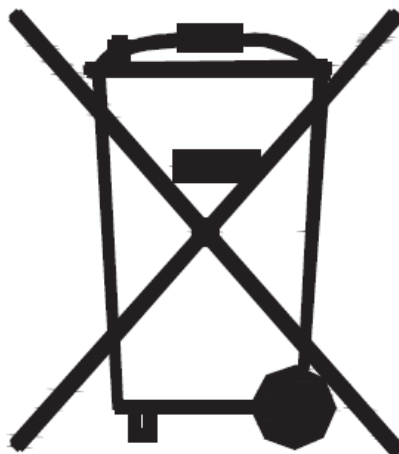
Dimensions: 255 x 210 x 560mm

Gross Weight: 7.2Kg

Please do not dispose electrical equipment as ordinary waste.

Help conserve natural resources and protect the environment:

when you have finished using this product, please dispose of it at your local waste collection or recycling centre in the area reserved for electrical equipment. Contact your local authority to find the nearest waste collection centre.



## NOTES

[illegible]