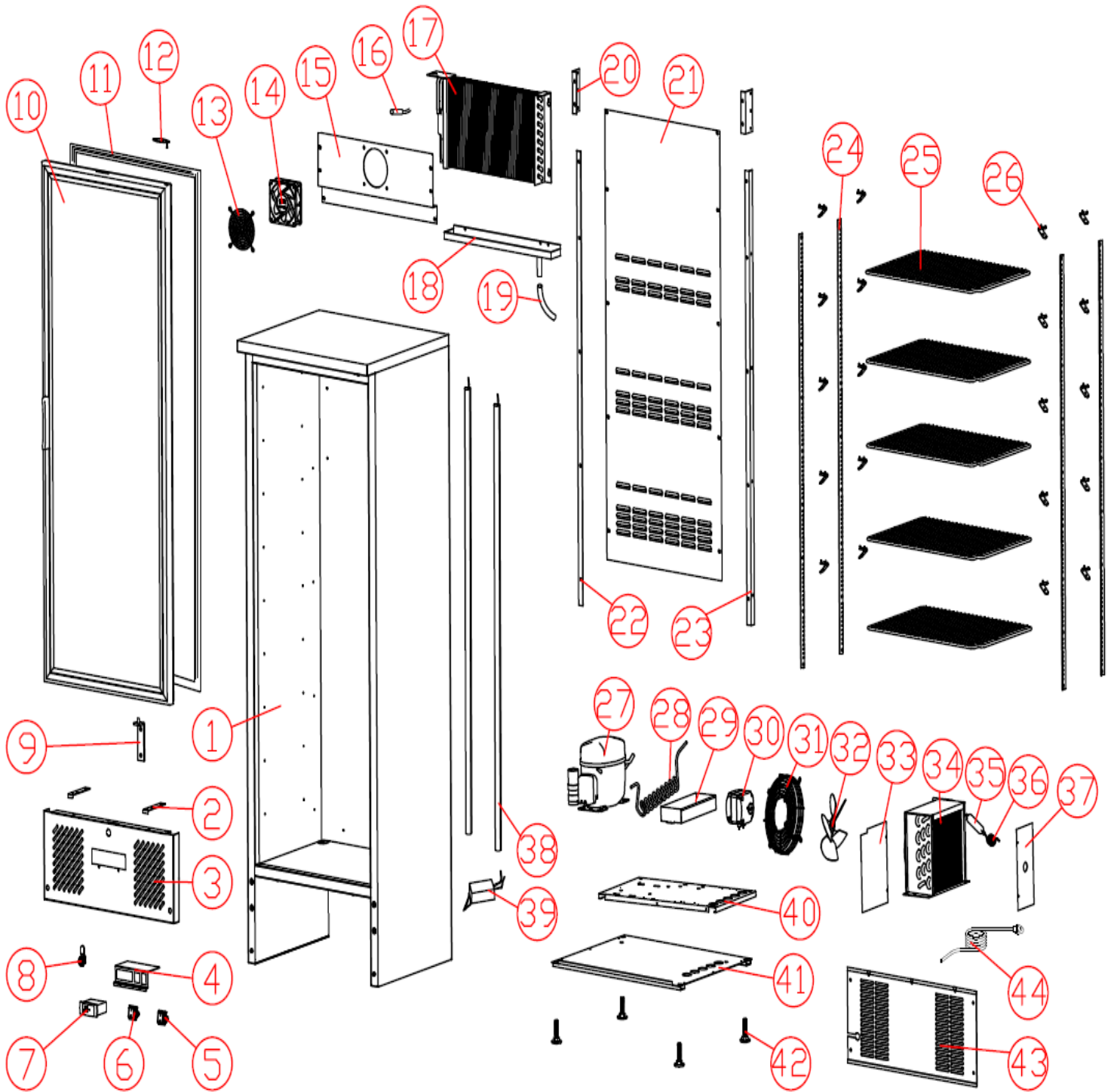


# BAR10(BAR10SS)HC

Exploded parts diagram





Part Number	Number	Description	Qty
***	1	Cabinet	1
***	2	Panel Block	2
X1-PANEL10	3	Panel	1
***	3	Panel (Stainless Steel)	1
***	4	Control Mount	1
***	5	Power Switch	1
X1-SWITCH01	6	Lamp Switch	1
X1-CONTROLLER01	7	Controller	1
X1-LOCK	8	Door Lock	1
X1-HINGE02	9	RH Bottom Hinge	1
X1-DOOR03	10	Right Glass Door	1
***	10	Right Glass Door (Stainless Steel)	1
X1-GASKET02	11	Door Gasket	1
X1-HINGE02	12	Upper Hinge	1
***	13	Evap Fan Guard	1
X1-FAN03	14	Evap Fan	1
***	15	Fan Mounting Plate	1
***	16	Probe	1
X1-EVAP04	17	Evaporator	1
***	18	Evap Drip Tray	1
***	19	Drain Hose	1
***	20	Evap Fan Cover Mounting Plate	2
***	21	Evap cover	1
***	22	Left Cover Mounting Plate	1
***	23	Right Cover Mounting Plate	1
***	24	Ladder Rack	4
X1-SHELF100	25	Shelf	5
X1-CLIP02	26	Clip	20
X1-COMP03	27	Compressor	1
***	28	Vaporising Coil	1
***	29	Vaporising Tray	1
X1-CONDFAN01	30	Cond Fan Motor	1
***	31	Evap Fan Guard	1
***	32	Cond Fan Blade	1
***	33	Condenser Baffle 1	1
X1-COND02	34	Condenser	1
***	35	Drier	1
X1-CAPILLARY 01	36	Capillary	1
***	37	Condenser Baffle 2	1
X1-LED01	38	LED light	2
X1-LEDTRAN	39	LED light power supply	1
***	40	Cooling Unit board	1
***	41	Base	1
X1-FOOTBAR10/20	42	Feet	4
***	43	Back Cover	1

***	44	Power Cord	1
-----	----	------------	---

\*\*\* Please contact Spare for assistance \*\*\*